
Chapter 7

Hardware Options

The hardware options are used to configure and modify settings for ScriptPro hardware. These settings are determined prior to installation, but can be modified as needed.

This chapter includes the following topics:

- ▶ **Main Menu Hardware Options**
- ▶ **Audio Volume**
- ▶ **Hardware**
- ▶ **Label Data**
- ▶ **Automated Update Configuration**



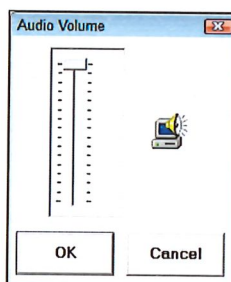
Main Menu Hardware Options

To access hardware options, select **Hardware** from the main menu. Some **Hardware** options are only applicable to specific software add-ons or builds. The following table includes details of where information can be found for **Hardware** options.

Hardware Option	Information Location
Audio Volume	For more information, see <i>Audio Volume</i> on page 7-2.
Hardware	For more information, see <i>Hardware</i> on page 7-3.
Label Data	For more information, see <i>Label Data</i> on page 7-9.
Printer Setup	This option is only applicable to Build 10. For more information, see the <i>Workflow Reference Manual</i> .
User Defined Status	This option is only applicable to Build 10. For more information, see the <i>Workflow Reference Manual</i> .
Vials	This option is only applicable to Build 10. For more information, see the <i>Workflow Reference Manual</i> .
Schedule/Communication	This option is only applicable to Build 10. For more information, see the <i>Workflow Reference Manual</i> .
Automated Update Configuration	For more information, see <i>Automated Update Configuration</i> on page 7-10.

Audio Volume

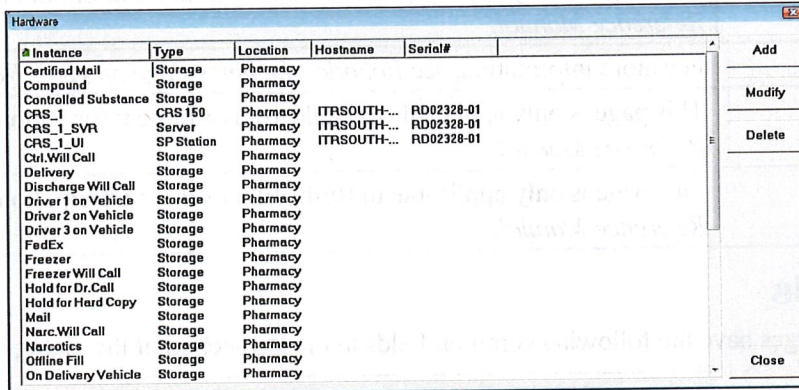
From the main menu, select **Hardware**, **Audio Volume** to display the **Audio Volume** dialog box. Adjust the volume for a workstation using the **Audio Volume** dialog box.



Audio Volume Dialog Box

Hardware

From the main menu, select **Hardware**, **Hardware** to display the **Hardware** dialog box.

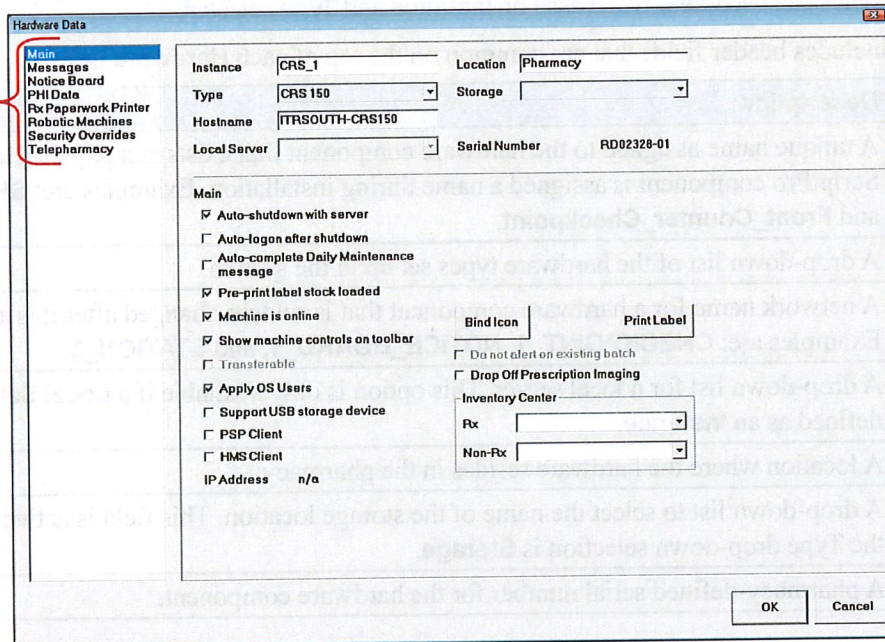


Hardware Dialog Box

Select a hardware item, then selecting **Add** or **Modify** to display the **Hardware Data** dialog box.

CAUTION: Adding hardware instances must only be performed by ScriptPro Customer Service unless adding a storage type for the SP Mobile Checkpoint, if applicable.

Hardware pages



Hardware Data Dialog Box

The **Hardware Data** dialog box is used to configure hardware components using the pages listed on the left side of the dialog box. Some pages are only applicable to specific software add-ons or builds. The following table includes details of where information can be found for **Hardware Data** dialog box pages.

Page	Description
Main	For more information, see <i>Main Page</i> on page 7-5.
Messages	This page is only applicable to Build 10. For more information, see the <i>Workflow Reference Manual</i> .
Notice Board	This page is only applicable to Build 10. For more information, see the <i>Workflow Reference Manual</i> .

Page	Description
PHI Data	For more information, see <i>PHI Data Page</i> on page 7-7.
Rx Paperwork Printer	This page is only applicable to Build 10. For more information, see the <i>Workflow Reference Manual</i> .
Robotic Machines	For more information, see <i>Robotic Machines Page</i> on page 7-8.
Security Overrides	This page is only applicable to Build 10. For more information, see the <i>Workflow Reference Manual</i> .
Telepharmacy	This page is only applicable to Build 10. For more information, see the <i>Workflow Reference Manual</i> .

Common Fields

Hardware component pages have the following common fields in the top section of the dialog box.

Instance	CRS_1	Location	Pharmacy
Type	CRS 150	Storage	
Hostname	ITRSOUTH-CRS150		
Local Server		Serial Number	RD02328-01

Hardware Data Dialog Box, Header Fields

NOTE: Unavailable fields can become active, based on **Instance** and **Type** selected.

The following table includes header fields that are common on the top of each **Hardware** page.

Field	Description
Instance	A unique name assigned to the hardware component that exists at a physical location. Each ScriptPro component is assigned a name during installation. Examples are: SP_Station_1 and Front_Counter_Checkpoint .
Type	A drop-down list of the hardware types set up in the system.
Hostname	A network name for a hardware component that is seldom changed after it is assigned. Examples are: CHECKPOINT_1 , NOTICE_BOARD_1 , and STATION_3 .
Local Server	A drop-down list for a local server. This option is only available if a Local Server is defined as an Instance .
Location	A location where the hardware resides in the pharmacy.
Storage	A drop-down list to select the name of the storage location. This field is active only when the Type drop-down selection is Storage .
Serial Number	A pharmacy-defined serial number for the hardware component.

Main Page

The **Main** page is used to set up all hardware components for the system, including servers and storage locations. An unlimited number of hardware components can be set up for the pharmacy.

Hardware Data Dialog Box, Main Page

The following table includes options on the **Main** page.

Item	Description
Auto-shutdown with server	Allows a robot to automatically shut down when the server shuts down for nightly maintenance.
Auto-logout after shutdown	Allows a robot to automatically start up and log on after the system is rebooted from a shutdown.
Auto-complete Daily Maintenance message	Enabled when Auto-shutdown with server is selected and the machine is a robot. This causes the robot to automatically process the Operator Action Message (OAM) and go to a Run state.
Pre-print label stock loaded	Allows operators to switch to standard labels (prints pharmacy-specific information) on a robot.
Machine is online	The robot remains online.
Show machine controls on toolbar	Displays the toolbar buttons associated with the robot. For more information, see <i>Toolbar</i> on page 4-12.
Transferable	Allows a transferable state for batched items; applicable only when the Type drop-down list selection is Storage .
Apply OS Users	Allows the system to add new Technical Support operators when an operator update is run.
Support USB storage device	Allows the transfer of files to a USB storage device. To enable this setting, contact ScriptPro Customer Service .
PSP Client	This option is only applicable to Build 10. Associates a robot with the Pharmacy Services Portal, if applicable.

Item	Description
HMS Client	<p>This option is only applicable to Build 10.</p> <p>Allows the viewing and modification of HMS Messages, if applicable. If HMS is present, but the check box is not selected, messages are still viewable, but actions in response to the messages are not.</p>
Do not alert on existing batch	Prevents an alert message from appearing if an existing batch is in a storage location.
Drop Off Prescription Imaging	Requires a scanned image of a drop off prescription.
IP Address	Displays the Internet Protocol (IP) address of this hardware component, if applicable.
Inventory Center	<p>Used to configure inventory if the system includes ScriptPro Inventory Management (SIM).</p> <ul style="list-style-type: none"> ▪ Rx—Used to select a default inventory for prescription inventory items. ▪ Non-Rx—Used to select a default inventory center for non-prescription inventory items.
<div data-bbox="159 814 277 856" style="border: 1px solid black; padding: 2px;">Bind Icon</div>	<p>Opens the Change Icon dialog box which allows for the selection of icons that display on batch and transfer dialog boxes.</p> <p>NOTE: This button is only applicable when the hardware Type is Storage.</p> <div data-bbox="440 932 1352 1020" style="border: 2px solid black; background-color: yellow; padding: 5px;"> <p>CAUTION: Modifications to the Change Icon dialog box are performed only by ScriptPro Customer Service.</p> </div>
<div data-bbox="159 1045 277 1087" style="border: 1px solid black; padding: 2px;">Print Label</div>	<p>Prints a label for the selected hardware item.</p> <p>NOTE: This button is only applicable when the hardware Type is Storage.</p>

PHI Data Page

The PHI Data page is used to set robots in the public view to a protected view to conceal sensitive patient information. This feature, combined with the Configurable Screen Saver, satisfies HIPAA requirements for Protected Health Information (PHI).

Hardware Data Dialog Box, PHI Data Page

The following table includes options on the **PHI Data** page.

Item	Description
PHI Data	<p>The following options set the PHI Data defaults for the selected robot:</p> <ul style="list-style-type: none"> ▪ Disabled—The protected health information is available. ▪ Enabled (Default ON)—The system defaults to Protected View at startup. ▪ Enabled (Default OFF)—The system does not default to the Protected View, but two icons with eyeglasses appear on the toolbar providing the ability to manually enable or disable the Protected View. <p>NOTE: The PHI Timeout Value is set in Custom Options. Even if Enabled (Default OFF) is selected on the PHI Data page, the PHI protected view turns on after the amount of time set in Custom Options. For more information, see <i>System Configuration Page</i> on page 5-18 .</p>
View	<p>Options for selection of whether PHI data is protected or blocked. The default value is Protected View.</p> <ul style="list-style-type: none"> ▪ Protected View—If one of the Enabled options is selected in the PHI Data area, patient names are only partially visible. ▪ Blocked View—This mode completely blocks the patient name. This option is not currently functional.

Robotic Machines Page

The **Robotic Machines** page is used to configure robotic features.

Hardware Data Dialog Box, Robotic Machines Page

The following table includes options on the **Robotic Machines** page.

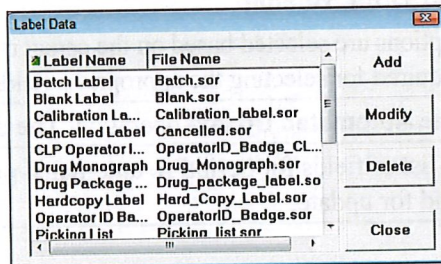
Item	Description
Robotic Machines	<p>Control Center Type—Displays Control Center Type. Options are:</p> <ul style="list-style-type: none"> ▪ OCC—Open Control Center ▪ CCC (6 slot)—Collating Control Center with 6 slots ▪ CCC (12 slot)—Collating Control Center with 12 slots ▪ ICC—Industrial Control Center <p>Algorithm Type—Displays algorithm type. Options are S (default) for Standard and H for High Speed.</p> <p>SPUD Type—Displays the SPUD Type. Options are Shelf and Conveyor. This area is blank unless the Type in the Header section of the page is SPUD.</p> <p>Instance—Displays Robotic Instance number.</p> <p>Dispenser Type—Displays vial dispenser type. Options are Vertical, Bulk, and Bulk & Spiral.</p>
CCC Display	<p>Highlight background when all vials for patient are filled—When this check box is selected, the colors on the CCC display are inverted after a script is filled. The background of the display lights up and the text is displayed in black. For more information on the CCC display, see <i>CCC Slot Displays</i> on page 8-3.</p>

Item	Description
Electronic Locks	<p>Used to manage settings for electronic door locks (EDL) and locking cell columns (LCC). If a robot does not include these features the drop-down lists and fields are not displayed.</p> <p>Hardware Installed—This drop-down list includes the following options:</p> <ul style="list-style-type: none"> ▪ None—The robot performs as if there is no EDL or LCC available. ▪ Electronic Door Locks—A lock button is displayed on the toolbar, and the Lock Mechanism drop-down list is displayed. ▪ Electronic Door Locks & Locking Cell Column—A lock button is displayed on the toolbar, an LCC image is displayed on the Machine View tab, and the Lock Mechanism drop-down list is displayed with a grayed out default selection of Auto-Relock (immediately on close). <p>Lock Mechanism—This drop-down list is displayed if the Hardware Installed selection is either Electronic Door Locks or Electronic Door Locks & Locking Cell Column. This drop-down list includes the following options:</p> <ul style="list-style-type: none"> ▪ User Lock—This selection requires pharmacy staff to manually select the lock icon to lock/unlock the EDL and/or LCC. ▪ Auto-Relock (timed)—This selection displays the following fields: <ul style="list-style-type: none"> ▫ Auto-Relock Timer (sec)—Indicates to the system when to engage the auto lock for the robotic cabinet door(s). ▫ Auto-Relock Unsuccessful OAM (sec)—In the event that the EDL did not automatically lock properly, this field defines the number of seconds until the system displays an applicable Operator Action Message (OAM). ▪ Auto-Relock (immediately on close)—When the robot doors are closed, the EDL is immediately locked and the LCC is opened. <p>NOTE: If the EDL is unlocked, but the doors are never opened, the robot automatically relocks the EDL (and opens the LCC if applicable) after one minute of inactivity.</p>

Label Data

From the main menu, select **Hardware, Label Data** to display the **Label Data** dialog box.

CAUTION: Managing Label template files must be performed only by ScriptPro Customer Service.

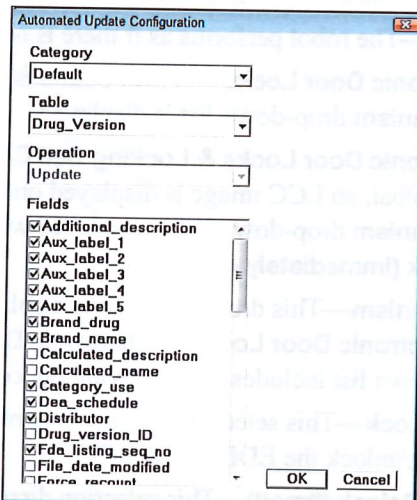


Label Data Dialog Box

This dialog box contains a list of label names and the associated label template file.

Automated Update Configuration

From the main menu, select **Hardware, Automated Update Configuration** to display the **Automated Update Configuration** dialog box. The selected settings determine which product information will be automatically updated.



Automated Update Configuration Dialog Box

The following table includes fields in the **Automated Update Configuration** dialog box.

Item	Description
Category	Displays the Automated Update category. Options are: <ul style="list-style-type: none"> ▪ Default ▪ Assigned to SP 200/SP 100 ▪ Assigned to SPUD ▪ User Modified ▪ Assigned to Script
Table	Displays the Automated Update table. Options are: <ul style="list-style-type: none"> ▪ Drug_Version ▪ Drug_Package_Version ▪ Sp200_Drug_Version <p>NOTE: Options are selected based on the category. It is possible that all three options are required for selecting the appropriate fields for the automated update.</p>
Operation	Displays the Automated Update operation. The default option is Update .
Fields	Displays a list of fields for ScriptPro automated product update. Selecting a check box sets the field for update.